

CITY DESIGN MATERIALS

- 1 / POWDER COATED STEEL | POWDER COATED ALUMINIUM
- 2 / CORTEN STEEL
- 3 / STAINLESS STEEL
- 4 / TIMBER - HARDWOOD | THERMO-TREATED WOOD
- 5 / WPC COMPOSITE WOOD | HIGH PRESSURE LAMINATE



POWDER COATED STEEL | POWDER COATED ALUMINIUM

CITYDESIGN STANDARD RAL COLOURS

RAL 1013	RAL 1021	RAL 1028	RAL 2002	RAL 2004	RAL 3000
RAL 3003	RAL 3005	RAL 4005	RAL 4009	RAL 5010	RAL 5013
RAL 5021	RAL 6005	RAL 6013	RAL 6018	RAL 6027	RAL 6029
RAL 7001	RAL 7012	RAL 7016	RAL 8017	RAL 9005	RAL 9006
RAL 9007	RAL 9010	MICACEOUS GREY	CORTEN COLOUR MATTE FINISH		

For each steel product and component, we select the most suitable raw materials and treatments based on our production process and the specific design requirements. Our steel treatments include hot-dip galvanisation, cold galvanising, Sendzimir galvanisation, cataphoresis, and primer coating.

For our aluminium products and components, we use in sheet form, extrusions, or castings. We then powder coat steel, stainless steel, and aluminium with polyester powder according to EN ISO 12944-2 standards. We offer a wide range of standard RAL colours with a wrinkled finish that varies in texture.

When customisation involves stickers, pad printing, or serigraphy, the finish will be either smooth matte or smooth glossy, depending on technical feasibility. We also offer exclusive sable colours with a unique metallic wrinkled texture.

Additional treatments and customisations are available upon request, including powder coating in non-standard RAL colours, smooth matte or smooth glossy finishes, and anti-graffiti treatment.

The above colours should be considered only as illustrative examples





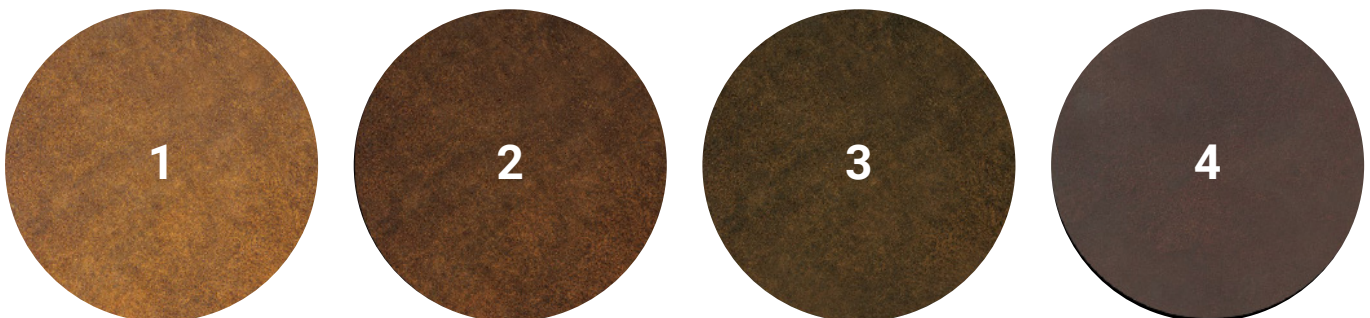
CORTEN STEEL

FEATURES AND CYCLES OF AGING CORTEN STEEL

Corten steel, due to its characteristic maturation and oxidation process, is considered a “live” material that can change over time in shades and hues. These changes depend on the shape of the object, its installation position, and the weathering cycles it undergoes. To initiate the corten steel maturation process, City Design uses an oxidation process through weathering. This system gives corten a distinctive non-uniform appearance, with varying shades of colour, especially noticeable in welded areas where the patina forms more slowly.

Colour variations are not defects but inherent features of the material. The average stabilisation period for corten, during which it develops its typical “testa di moro” (brown) colour, is about 12 to 18 months with adequate weathering. During this maturation process, corten may release oxide (“wash-out”), potentially staining surfaces beneath the products. This is a natural and expected behavior of the material.

To reduce wash-out, City Design offers a specific “ANTI-WASHOUT” treatment upon request for an additional cost. While this treatment does not completely eliminate oxide runoff, it significantly reduces it and gives the product a darker, more refined appearance.



The reproduction of the shades shown on paper is only indicative. Upon request, platelet samples can be provided.

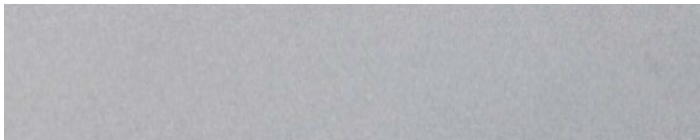
1. Appearance/shades of oxidized product at the time of delivery (approximately 2 months of oxidation).
2. Appearance/shades of oxidized product after approximately 4/6 months from its installation.
3. Appearance/shades of the product at the end of the period of oxidation after about 12/18 months of installation
4. Corten steel with “Anti-washout” Metalco special treatment



STAINLESS STEEL



BRUSHED



SHOTBLASTED

For our stainless-steel products and components, we normally use AISI 304 or 304L stainless steel, but in case of installation in highly aggressive conditions we recommend requesting AISI 316 stainless steel.

Our stainless steel is usually brushed or shotblasted, depending on the technical features of the product.

Electropolishing treatment is also available, upon request.



TIMBER

HARDWOOD (Iroko, Movingui or similar)

Hardwood is provided with a water-based pigmented finish treatment. Upon request, the wood can be supplied without this finish. Additionally, FSC-certified hardwood is available upon request. City Design® reserves the right to select the most suitable hardwoods for the product, project requirements, and market availability.

Wood is a natural material, and its appearance will change over time due to:

- *A natural tendency to grey, which can vary in intensity and speed depending on the type of wood and the environmental conditions where the product is installed.*
- *A natural propensity to develop cracks and fissures due to volume changes caused by climatic and environmental variations at the installation site.*



These characteristics are typical and do not constitute a defect. However, proper and regular maintenance of wooden elements, tailored to the type of wood and environmental conditions, can help preserve their quality and durability, slowing down the natural aging process.

THERMO-TREATED WOOD

Pine wood undergoes heat treatment, resulting in a material with an extended life cycle, enhanced resistance to weathering and decay, and increased strength and stability. It can also be supplied with a water-based pigmented finish treatment upon request. FSC or PEFC certification is available upon request.

Wood is a natural material, and its appearance will change over time due to:

- *A natural tendency to grey, which varies in intensity and speed depending on the type of wood and the environmental conditions where the product is installed.*
- *A natural propensity to develop cracks and fissures due to volume changes caused by climatic and environmental variations at the installation site.*
- *The presence of knots of varying sizes in thermo-treated pine wood.*



These characteristics are typical and do not constitute a defect. However, proper and regular maintenance of wooden elements, based on the type of wood and environmental conditions, can help preserve their quality and durability, slowing down the natural aging process.





TIMBER ALTERNATIVES

WPC COMPOSITE WOOD

City Design® uses WPC (Wood Plastics Composite) on some products. This is a material consisting of vegetable elements, such as fibres or wood flour, and thermoplastic material.

City Design reserves the right to choose the type of WPC best suited to the project and/or product requirements.



HIGH PRESSURE LAMINATE

HPL (High Pressure Laminate), a material particularly suitable for outdoor use, has been selected for our products and it is available in two different colours: white and black. Conditions can help preserve their quality and durability, slowing down the natural aging process.

