



Brandon Canopy

Brandon is a large versatile freestanding monopitch canopy with steel beam supports and roof frame that is clad as standard with multiwall polycarbonate. A low-maintenance and durable option for protecting customers, employees, or pupils from the weather.

Customisable options include:

- Powder coating in a range of RAL colours
- Can be clad with UV stable PET sheeting
- Bespoke sizes available on request
- Surface or subsurface mounting
- Guttering

Advantages of this design include:

- Monopitch roof for water run-off
- Minimal design increases usable space beneath
- Does not require fixing to the building
- Extends usable outdoor space
- Low Maintenance

Ideal for:

- Entrance
- Outdoor classrooms
- Waiting areas
- Courtyard covers

Our steel structures are manufactured to BS EN 1090 standards.

Manufactured to suit customer requirements

**TECHNICAL
DRAWINGS
AVAILABLE ON
REQUEST**

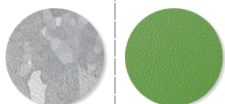
**PLEASE CONTACT
OUR SALES TEAM**

Materials, Finishes & Options

Steel

Available in the options below;
for further details on our **steel** visit our **materiality page >>**

Standard Premium



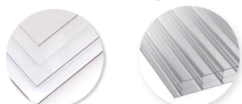
Galvanised

Powder coated

Plastic Roof Cladding

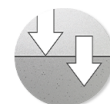
Available in the options below;
for further details on our **Plastic** visit our **materiality page >>**

PET Sheet Triple wall Polycarbonate



Fixtures

This product can be customised with a range of optional fixtures. If you have any further bespoke requirements **get in touch**, our sales team will be happy to help.



Surface mount / Root fixed



Bespoke sizes



Security additions