

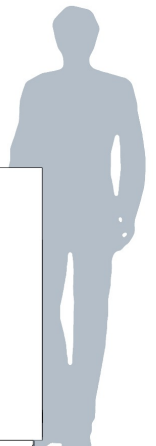
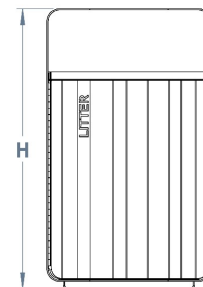
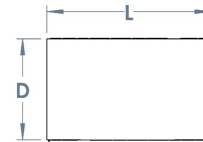


Stoke Litter Bin

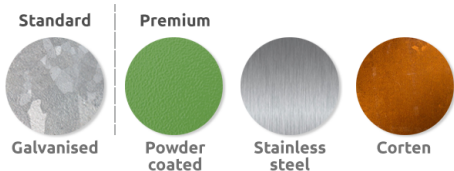
If you're looking for a smart, practical litter solution then the Stoke Litter Bin is an excellent choice. Manufactured from 3CR12 stainless steel then powder coated as standard this comes with a capacity of 135 litres complete with galvanised steel liner.

The surface mounted Stoke Litter Bin features a stylish curved covered top and comes complete with laser cut lettering and coloured panel and stainless-steel strip to door top too. A recycling version and an ashtray are optional extras.

L: 650mm x D: 400mm x H: 1110mm x Capacity: 135L

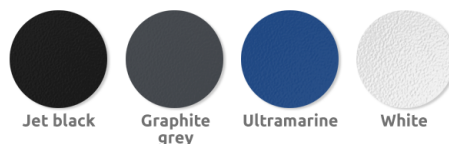


Steel
 Available in the options below;
 for further details on our **steel** visit our **materiality page >>**



Materials, Finishes & Options

Colours
 Available in a huge range of **RAL** colours.
 Our most popular colours are;



Fixtures
 This product can be customised with a range of optional fixtures. If you have any further bespoke requirements **get in touch**, our sales team will be happy to help.

