



Moreton Canopy

The Moreton is a Gull Wing style canopy which is supported by a series of steel posts and beams, with PET roof extending outwards on both sides, creating a distinctive shape.

Customisable options include;

- Powder coating in a range of RAL Colours
- available with multiwall polycarbonate cladding
- Varying roof lengths
- Bespoke guttering options
- Leaf Guards

Advantages of this design include;

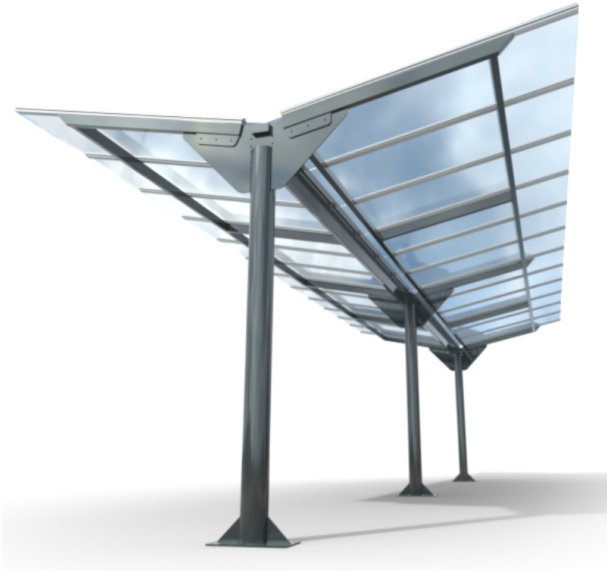
- Unique and modern look.
- Reduced risk of water damage to the structure and the area below the canopy.
- Creates a natural flow of air, providing ventilation and reducing the buildup of heat.
- Can be customised to fit a variety of spaces.
- Durable and long-lasting.

Ideal Canopy option for;

- Walkways
- Cycle Parking
- Schools
- Shopping centres
- Hospitals
- Outdoor Play Areas

All our Canopies are manufactured to BS EN 1090 Standards.

Standard size - L: 5000mm x D: 4000mm x H: 3100mm

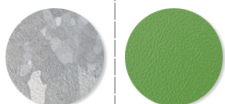


Materials, Finishes & Options

Steel

Available in the options below;
 for further details on our **steel** visit our **materiality page >>**

Standard Premium



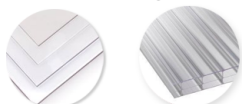
Galvanised

Powder coated

Plastic Roof Cladding

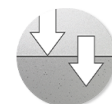
Available in the options below;
 for further details on our **Plastic** visit our **materiality page >>**

PET Sheet Triple wall Polycarbonate



Fixtures

This product can be customised with a range of optional fixtures. If you have any further bespoke requirements **get in touch**, our sales team will be happy to help.



Surface mount / Root fixed



Bespoke sizes



Security additions